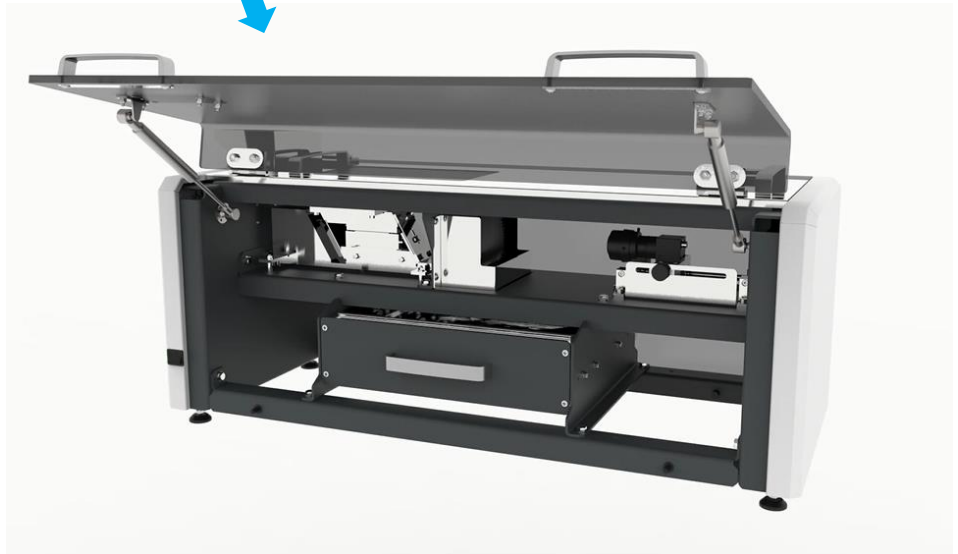


Powder and Granulation Shape and Size analyzer!



EyeTech-Dry

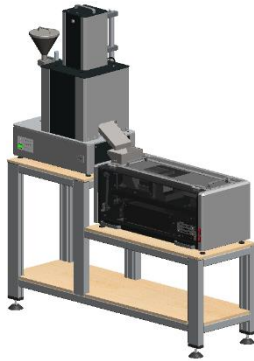


Detecting any type of shape and size!

The EyeTech-Dry Pellet Size & Shape distribution Analyzer system is a top of the line to determine in real time the morphometry of granules. The system uses a hopper to collect the samples on a vibration table where the granules are dispersed and prepared for a free fall. During the free fall a CCD / CMOS camera system catches all (morphometry) details of the granules.

More information! | Ask our sales representatives for more information. info@ambivalue.com

© AmbiValue 2017



EyeTech-Dry | Shape & Size Analyzer

The EyeTech-Dry Pellet Size & Shape distribution analyzer system is a top of the line analyzer system to determine in real time the morphometry of granules.

The system uses a hopper to collect the samples on a vibration table where the granules are dispersed and prepared for a free fall. During the free fall a CMOS camera system catches all (morphometry) details of the granules.

With software the Critical to Quality (CTQ) parameters are displayed to the operator. The user can define all sorts of criteria which are useful for the characterization of the granules for a specific application. The system allows to inspect an equivalent of 50 kg per hour with all granules captured. This means that a great deal of computer capacity is needed for such analysis.

The data is stored in databases and can be retrieved in an easy way. The user can define all sorts of recipes relevant for a quality control application. Infinite graphical possibilities are offered to characterize the quality of the granules.

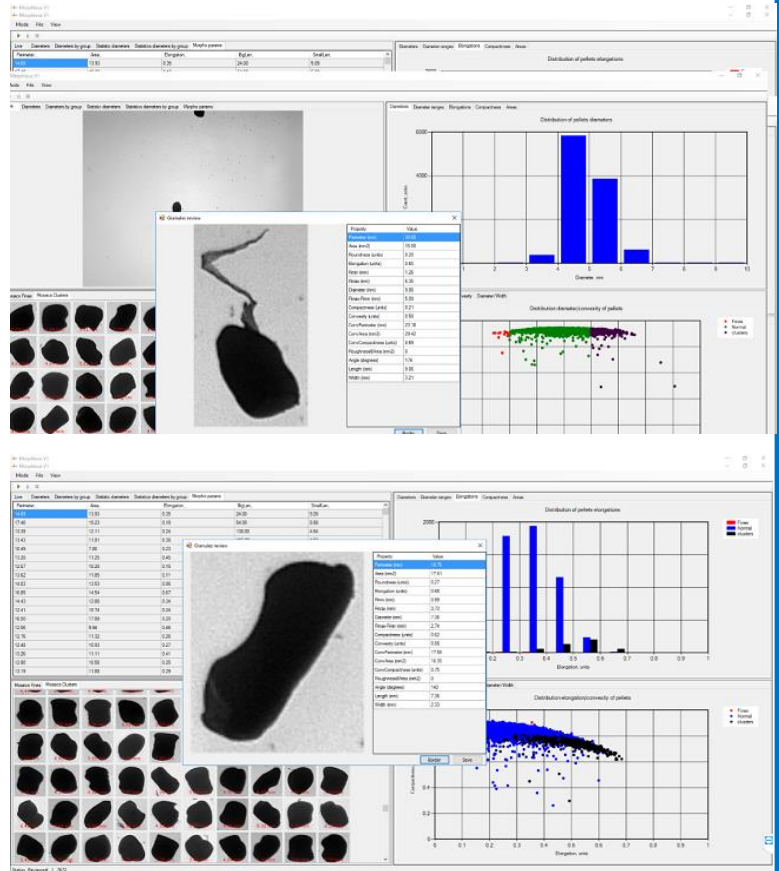
The sophisticated software on the EyeTech-Dry systems allows extensive inspection of Critical to Quality inspection of all possible matters related with the quality of the granulation production process.



EyeTech-Dry Size & Shape Analyzer

EyeTech-Dry Concept

With state of the art machine vision technology implemented, this instrument is capable of detecting all possible Shapes and Sizes of pellets or powders. Full detailed recipes of various types can be entered in the analyzer. Standard info such as operator, date, product, Lot number, quality limits, process interfacing and many more. The software shows the specific mosaics of the Shape and Size. Histograms of the Shape & Sizes are displayed in accordance with the client's specification.



Specifications

Temperature Range	15-40 °C	
Power Supply	230V AC/115V AC, 50/60 Hz	
Camera	USB 3 CMOS resolution: 1936 x 1216, 161 f/s, Pixel size 5.86 µm: Color calibration module. USB3	
Power consumption	18W	
Light Source	LED Ring light, white light spectrum	
Size range:	From 1µm till cm	
Throughput resolution (for pellets)	Up to 50 kg/hour	
PC	SDD HDD Motherboard RAM	SanDisk Ultra II SDSSDHII-120G-G25 Western Digital Blue WD10EZEX 1 TB Gigabyte GA-Z97X-UD3H Kingston HyperX Fury Black HX318C10FBK2/16 16 GB DDR3-RAM
	Processor Graphics Card Power supply PC box	Intel® Core™ i7 i7-4790K Quad Core 4 x 4.0 GHz PNY VCQK2200-PB 4 GB Coolermaster G750M 750 W Cooler Master Black
Software	Windows® & (or higher). Powered by Mishell® Mishell is a registered trademark of Microptik BV Windows is a registered trademark of Microsoft corporation	
Dimensions (LxWxH)	80 x 33 x 35 cm	
Weight	59 kg	

Ask our sales representatives for more information. info@ambivalue.com